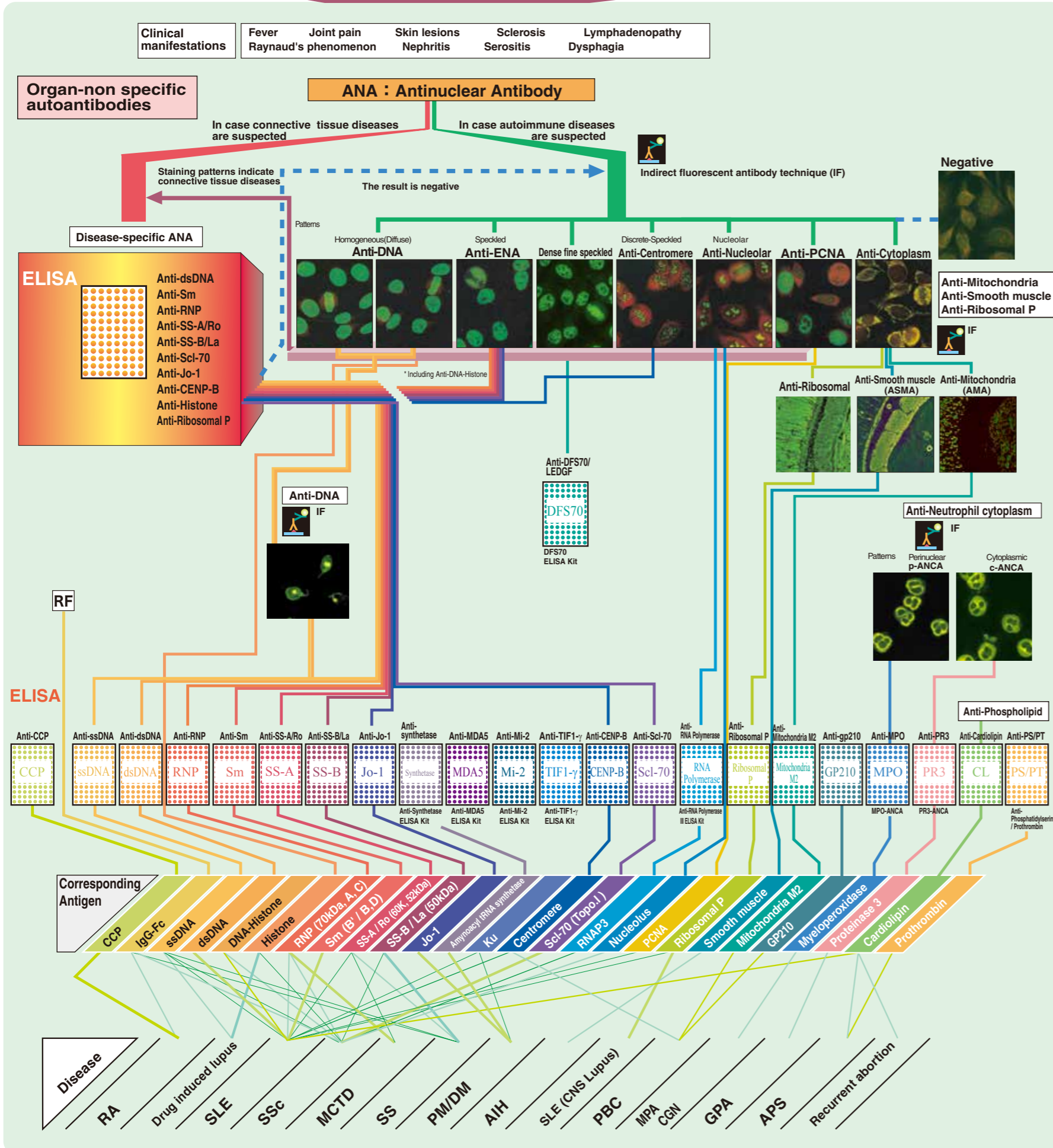
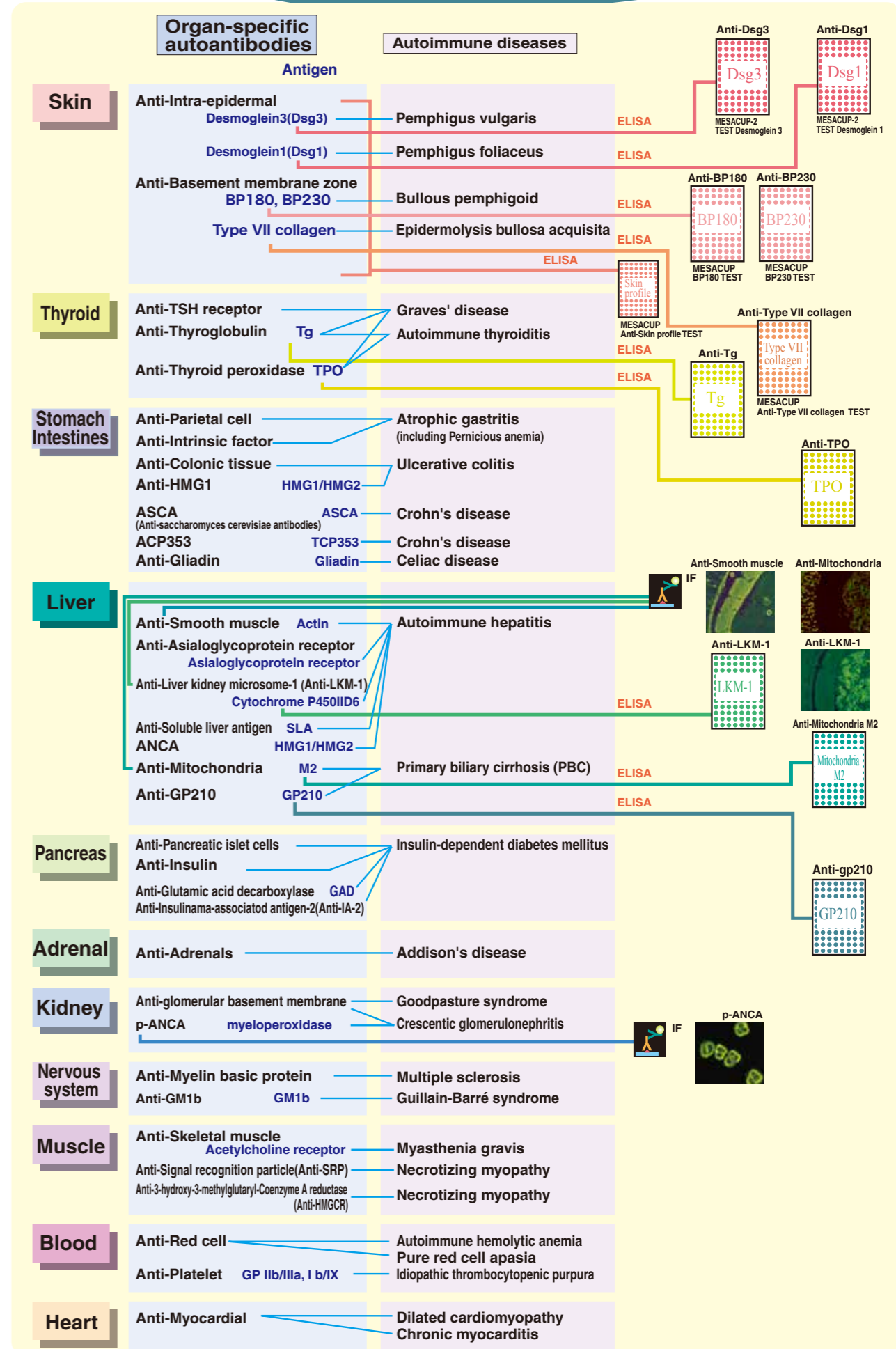


Diagnostic Tests for Autoimmune Diseases

Systemic autoimmune diseases



Organ-specific autoimmune diseases



APS: anti-phospholipid antibody syndrome
 MCTD: mixed connective tissue disease
 PBC: primary biliary cirrhosis
 PM/DM: polymyositis and dermatomyositis
 RA: rheumatoid arthritis
 SS: Sjögren's syndrome
 SLE: systemic lupus erythematosus
 SSc: systemic sclerosis
 GPA: granulomatosis with polyangiitis
 AIH: autoimmune hepatitis
 MPA: microscopic polyangiitis
 CGN: crescentic glomerulonephritis