

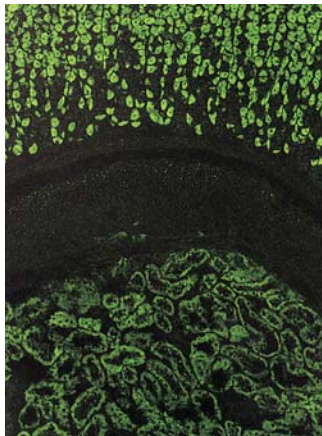
IFA kit for detection of **AMA,ASMA and APCA** in human serum

FLUORO AID-1 TEST



Easy and Accurate to detect AMA, ASMA and APCA

The FLUORO AID-1 TEST mainly detects anti-mitochondrial antibodies (AMA), anti-smooth muscle antibodies (ASMA) and anti-parietal cell antibodies (APCA) by indirect immunofluorescence. Rat stomach/kidney is used as a substrate.

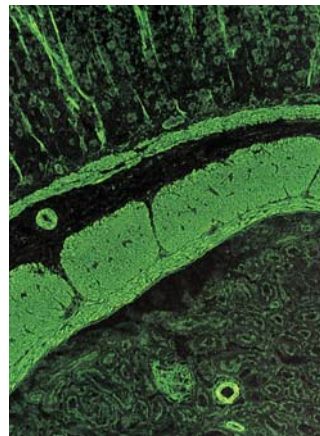


AMA

Related disease:

PBC (primary biliary cirrhosis)

Specific fluorescence is seen in cytoplasm of proximal and distal renal tubules and cytoplasm of stomach parietal cells.

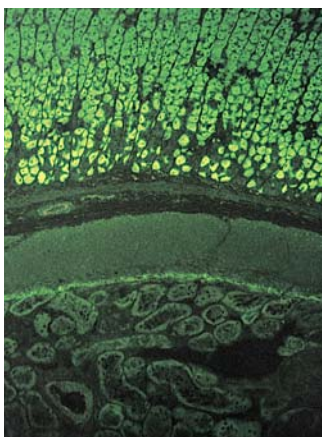


ASMA

Related diseases:

**Lupoid hepatitis
Active chronic hepatitis**

Specific fluorescence is seen in muscularis mucosae, muscularis, stomach submucosa and renal vessel walls.

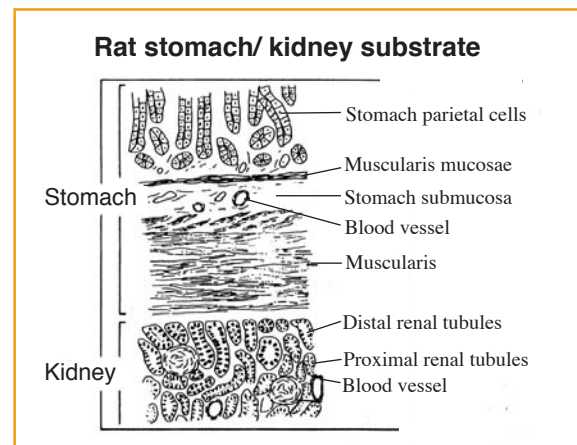


APCA

Related diseases:

**Chronic atrophic gastritis
Pernicious anemia**

Specific fluorescence is seen in stomach parietal cells. Cytoplasm and lumenal border of kidney tubules are negative. (AMA will stain parietal cells and kidney tubules.)



Product	Code No.	Quantity	Storage	Kit components
CE FLUORO AID-1 TEST	4250E	40 wells	2-8 °C	Rat stomach/kidney substrate slide FITC conjugated goat anti-human immunoglobulins PBS buffer, APCA positive control serum AMA positive control serum ASMA positive control serum Mounting medium, Cover slip, Blotting paper