

IFA kit for detection of anti-dsDNA antibodies in human serum

FLUORO nDNA TEST

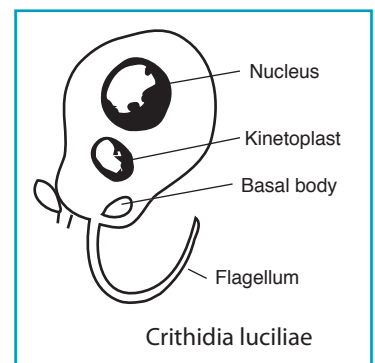


Easy and Accurate to detect anti-dsDNA antibodies

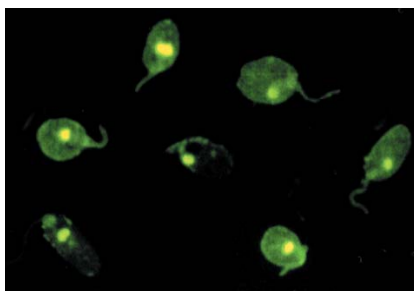
Antinuclear antibodies can be found in the sera of patients with autoimmune diseases such as systemic lupus erythematosus (SLE). Especially, anti-native DNA antibodies (or anti-double stranded DNA antibodies) are highly specific for SLE. Therefore, detection of these antibodies is important in the diagnosis of SLE patients.

The mitochondrion (kinetoplast) of the *Crithidia luciliae* contains a large amount of ds-DNA but does not contain ss-DNA or histone. Therefore, the FLUORO nDNA TEST, which uses *Crithidia luciliae* as the substrate, is able to isolate and detect anti-nDNA antibodies with ease and accuracy.

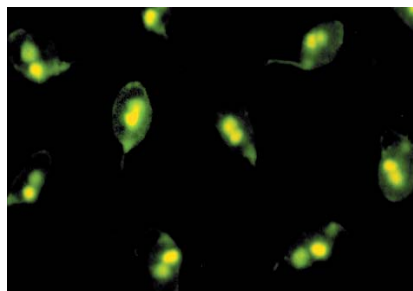
The presence of anti dsDNA antibodies have been included in the Classification of SLE by an Arthritis and Rheumatism Association subcommittee (revised in 1982 and partially revised in 1997).



Positive

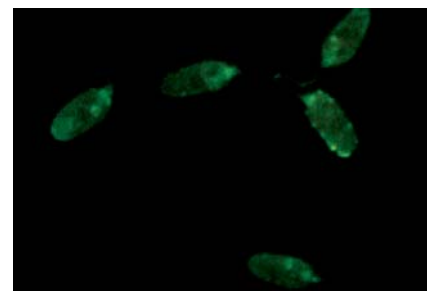


Specific fluorescence is seen in the kinetoplast.



Fluorescence is seen in the kinetoplast and nucleus.

Negative



No specific fluorescence is seen in the kinetoplast.

Product	Code No.	Quantity	Storage	Kit components
CE FLUORO nDNA TEST	4270E	80 wells	2-8 °C	Crithidia luciliae substrate slide FITC conjugated goat anti-human immunoglobulins PBS buffer
	4280E	160 wells	2-8 °C	Positive control serum Negative control serum Mounting medium, Cover slip, Blotting paper